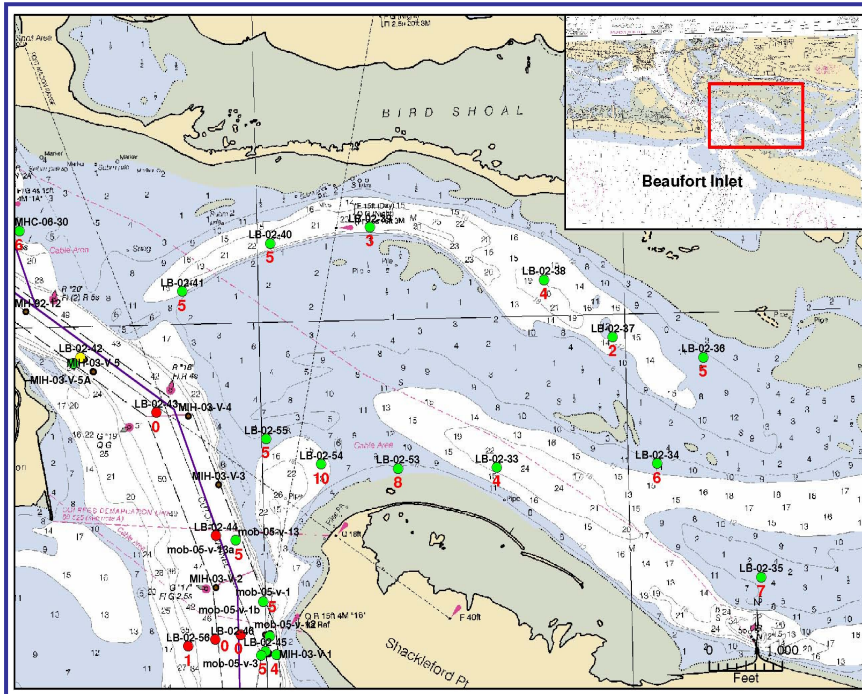


# BOGUE BANKS MASTER BEACH NOURISHMENT PLAN & GEOTECHNICAL INVESTIGATIONS

Client: Moffatt & Nichol



## Key Elements

- ① Data Collection & Review
- ② Historical Evaluation of Existing Conditions
- ③ Pre-Application Conference

**Date:** 2009-2011

**Cost:** \$32,568.

## Contact:

*Johnny Martin, Assoc. Vice-President  
Moffatt & Nichol*

*1616 East Millbrook Road, Suite 160  
Raleigh, NC 27609*

*(919) 781-4626*

*[jmartin@moffattnichol.com](mailto:jmartin@moffattnichol.com)*

Coastal Tech, under subcontract with Moffatt & Nichol has been selected to provide geotechnical services to evaluate and prioritize potential sand sources for nourishment of Carteret County beaches. Potential sand sources include: U.S. Army Corps of Engineer's (USACE) Morehead City Ocean Dredged Material Disposal Site, Morehead City Harbor maintenance dredging, shoals at Bogue Inlet, and other potential borrow areas identified by the USACE. The work will supplement the USACE *Feasibility Study* to provide sand for beach nourishment for up to 50 years.



*Enhancing Coastal Life.*