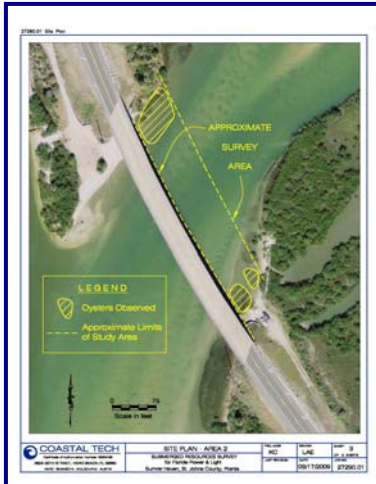


# FLORIDA POWER & LIGHT ENVIRONMENTAL CONSULTING & ASSESSMENTS

Client: Florida Power & Light Company



Coastal Tech is under a three year continuing services contract to FPL to provide these services on an as-needed basis through January 2012.

At the beginning of 2009, Coastal Tech received a contract for a 3-year period to provide professional environmental consulting and environmental assessments for Florida Power & Light Company (FPL). The specific services under this contract include various environmental and cultural resource surveys/analysis, submerged aquatic

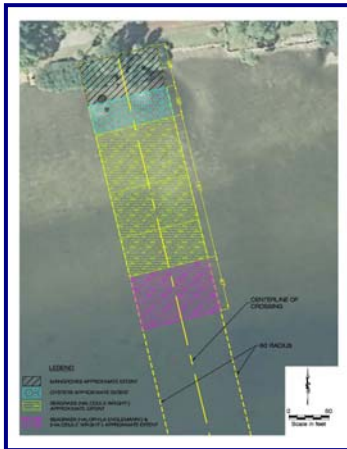
vegetation monitoring and mapping, seagrass studies, and wetland delineations.

To date, Coastal Tech has completed submerged aquatic vegetation (SAV)/benthic resource surveys for three proposed FPL utilities crossings: two in Summer Haven (St. Johns County) and one in Bradenton (Manatee County). Coastal Tech employed the use of snorkeling equipment when necessary to investigate the presence/absence of submerged aquatic vegetation and other



benthic resources, in order to map their occurrences relative to the proposed utilities crossings and within a 50-foot radius as required by the U.S. Army Corps of Engineers.

A handheld GPS unit was used for all three SAV/benthic resources surveys to waypoint all significant changes in species or community composition along and adjacent to the proposed utilities crossings.



## Key Elements

- Site Visits
- Submerged Aquatic Vegetation (Seagrass) Surveys
- Cultural Resources Surveys
- Benthic Resources Surveys
- Final Reports

**Date:** 2009 – 2012

**Acreage:** St Johns-1.37 acres  
Manatee-10.33 acres

**Species:** Oysters, Star Grass, Shoal Grass

**Technique:** Transects with *in situ* quadrats

**Cost:** \$6,000. (St. Johns County)  
\$7,500. (Manatee County)

## Contact:

*Beverly Musser, Environmental Specialist Distribution Environmental*  
**Florida Power & Light Company**  
7200 NW 4<sup>th</sup> Street  
Plantation, FL 33317  
(954) 321-2183  
[beverly.musser@fpl.com](mailto:beverly.musser@fpl.com)



*Enhancing Coastal Life.*