

STUMP PASS SUBMERGED AQUATIC VEGETATION SURVEY

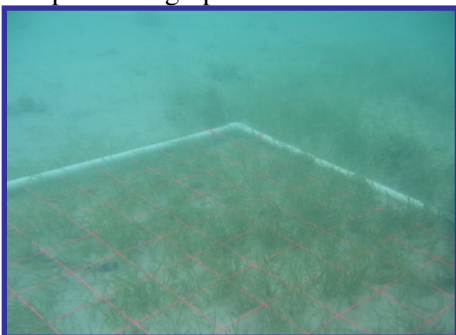
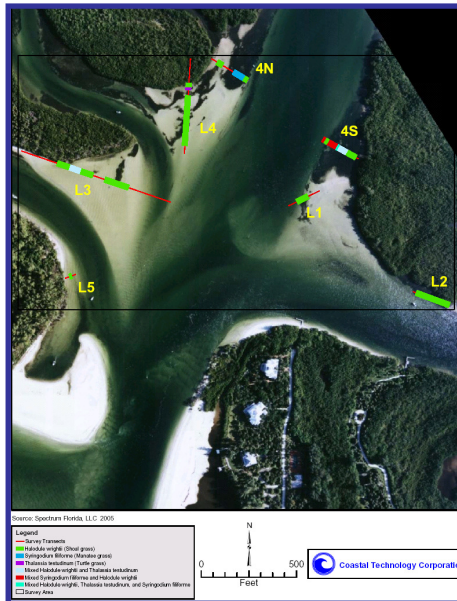
Client: Charlotte County



In July 2003, Charlotte County completed construction of their first Erosion Control Project, restoring three critically eroding beach segments along Manasota Key, Knight Island and Don Pedro Island, using sand dredged to restore the Stump Pass 1980 channel alignment and from the ebb shoal borrow area.

In 2004 and 2005, Charlotte County completed the annual monitoring surveys and requirements in accordance with the Project's permits. The design, permit and bid process components of the Post Storm Recovery and Maintenance are complete and the project has moved into the monitoring phase.

Coastal Tech performed pre- and post-construction Submerged Aquatic Vegetation (SAV) surveys along fixed transects with sampling stations at regular intervals. Each sampling point consisted of a 1-meter square quadrat where presence or absence of SAV, percent coverage, and location were documented. Coastal Tech identified all SAV types present, including seagrass species, macroalgal assemblages, any other submerged resources if present, and determined average resource heights. For each SAV survey, Coastal Tech compiled a comprehensive report summarizing the results and associated calculations, and provided graphics in GIS format. Final reports were submitted to Florida



Department of Environmental Protection for their review to ensure that dredging activities are not adversely impacting the seagrass beds. Coastal Tech also performed basic water quality analysis (e.g., salinity, pH, dissolved oxygen, conductivity, etc.) in the field.

Key Elements

- Permit Compliance
- Pre- and Post-Construction Submerged Aquatic Vegetation (Seagrass) Surveys
- Water Quality Analysis

Date: 2006

Cost: \$ 31,176

Contact:

*Dan Quick, P.E.,
County Engineer
Charlotte County
18500 Murdock
Circle
Port Charlotte, FL
(941) 575-3603
(941) 637-9265 Fax
Dan.Quick@charlottefl.com*

